

Community Health Assessment

Taney County, MO

2008

Taney County Health Department
Making a Positive Difference

Prepared and Written By:

Stacy Cummings
Jenine Conway
Donna Gold
Peggy Jelik
Joseph Njenga
Buddy Roberts
Thom Borchert
Steve Putter
Robert Niezgoda
Stephen Njenga

In 2005, the work of the Taney County Health Department and City of Branson Health Department was acknowledged during the 2005 accreditation process that acknowledged the collaborative efforts that resulted in successful public health responses and programs in the county. The rigorous standards of the Missouri Institute for Community Health were met by the departments' efforts through the first dual-accreditation granted in Missouri. In February of 2008, the Taney County Health Department and City of Branson Health Department agreed to merge. At that time, the City of Branson Environmental Public Health staff became the environmental section of the Taney County Health Department.

Acknowledgements

The completion of this community assessment involved many individuals and organizations. Sincere appreciation is given to the following community partners who were instrumental in providing research, data, editing, and assistance. Thank you.

Bradleyville Public Schools

City of Branson

City of Branson Parks and Recreation

City of Branson Public Schools

City of Branson Public Works

City of Hollister

College of the Ozarks

Healthy Family Task Force

Hollister Public Schools

James River Basin Foundation

Kirbyville Public Schools

Mark Twain Public Schools

Missouri Department of Agriculture

Missouri Department of Conservation

Missouri Department of Elementary and Secondary Education

Missouri Department of Health and Senior Services

Missouri Department of Mental Health

Missouri Department of Natural Resources

Missouri Department of Social Services

Missouri State Highway Patrol

Skaggs Community Foundation

Skaggs Community Health Center

Taney County Sewer District

Taney County Health Department

Taneyville Public Schools

United States Corps of Engineers

United States Environmental Protection Agency

United States Department of Agriculture

White River Basin Foundation

Methodology

Data for the 2008 Taney County Community Health Assessment was collected from a variety of primary and secondary data sources. To ensure accuracy, data from sources were examined to clarify reporting sources, data collection methods, and population or sample sizes. Every reasonable effort was made to collect and present reliable, accurate information for dissemination. Efforts were made to update the charts with the most recent information available from the reporting agencies. Presented data that seemed to be misleading, or of questionable quality, was compared to other sources to check for errors.

Rate calculations were based on the methods utilized by the Missouri Department of Health and Senior Services and population estimates provided by the United States Census Bureau. Efforts were made to review calculations to determine accuracy and reliability. The charts and graphs presented in the chapters were developed using the data collected from the referenced sources. Every effort was made to provide the reader with charts and graphs that provided as much information as possible in an understandable format. When charts and graphs were found to be unclear, efforts were made to clarify and reformat the information.

Every effort was made during the editing process to limit the possibility of errors in the presentation of data and calculations. However, we are unable to prevent errors do to the collection, compilation, and dissemination of data by reporting agencies. Data cited from reporting agencies is provided with the understanding that data is only as reliable and valid as the methodologies and processes employed to collect, evaluate, standardize, and report the data. Additionally, reliability and validity of locally collected data was limited because of collection procedures that limited randomization. Consequently, locally collected data should be considered to be representative of the population groups sampled and cautiously representative of the county as a whole. All of the information presented in this assessment was reviewed and edited for accuracy. Any errors within this assessment are purely unintentional and are deeply regretted. If an error is noted, please let us know; so that we may identify, correct, or clarify the information.

Table of Contents

Introduction_____	vii
Summary_____	viii
Chapter 1: Demographic and Socioeconomic Issues_____	1
Chapter 2: Environmental Health Issues_____	15
Chapter 3: Health Care Services_____	35
Chapter 4: Communicable Disease Issues_____	46
Chapter 5: Chronic Diseases and Injuries_____	57
Chapter 6: Minority Health Issues_____	78
Chapter 7: Maternal and Child Health_____	85
Chapter 8: Public Health Services_____	105
Chapter 9: Senior Health Issues_____	113
Chapter 10: Social Issues_____	126
Chapter 11: Youth Issues_____	140
Appendix A: Policy Changes Related to Public Health	
Appendix B: Leading Health Problems and Projections	
Appendix C: Smoke-Free Restaurant Survey Summary	

Introduction

Assessing the community's health is an ongoing process that requires the regular and systematic collection, assembly, analysis and dissemination of information regarding the health needs of the community. This process is the foundation for improving and promoting the health of community members through identification of the factors that affect the health of Taney County residents and determining the availability of resources to adequately address health issues.

The purpose of the 2008 assessment process is to provide a report to the community regarding progress that has been made on previously identified priorities and to review current trends that may require action to protect the health of the public. This valuable public health process of ongoing community health assessment will help guide future programs and goals of local public health. The many services that are provided by the Taney County Health department is expected to increase in response to population and economic growth that is occurring in the area. Additional services will also be added as new health concerns are identified and programs are developed or expanded. This assessment has also helped the health department identify priorities related to the community by providing the basis for discussion and action. The previous health assessment, in the year 2005, identified three priority areas that were presented to the community to increase awareness and stimulate public health efforts. The priority areas focused on tobacco use, obesity and family/domestic violence. From these priorities, community meetings and groups met and early progress toward addressing these issues was observed.

The Taney County Health Department provides a variety of services that help protect residents and visitors of Taney County. However, the department has recognized the necessity to further strengthen and develop various collaborative efforts among community leaders, businesses, hospitals, private practitioners, and schools etc, in order to identify the health status, needs, strengths, health concerns, gaps and assets in the community. The Health Department collaborates routinely on many projects with community partners to help the residents and visitors of Taney County. Many community groups provide resources and partnerships with the health department in order to address the public health issues in the county. Without these partnerships, much of the progress in addressing public health concerns that has been achieved in the county would not have been possible. The Taney county health department is committed to building healthier communities in Taney County and "making a positive difference".

Summary

The previous Community Health Assessment in 2005 identified Tobacco Use, Obesity and Nutrition, and Family/Domestic Violence as the top three health priorities in Taney County. Data from the recent community health assessment indicates that these issues continue to have a disproportionate impact on the residents of Taney County. The new data indicates that the Family/Domestic Violence priority should include other safety issues that are present in the community.

The results of this assessment indicate that the health priorities for Taney County should be:

1. Tobacco Use Prevention
2. Obesity, Nutrition, and Physical Activity
3. Child and Family Safety

Other health priorities that need to be addressed include communicable disease prevention and senior issues. Data from the Community Health Assessment indicated that sexually transmitted diseases have increased substantially since 2006 in Taney County. This increase was seen with cases of Chlamydia while Gonorrhea have essentially remained steady. The number of Syphilis cases also increased during same time period. These trends are disturbing because they indicate behaviors in the community that may result in exposure to serious diseases such as Hepatitis B and HIV. It is therefore necessary to focus more educational efforts toward prevent risky sexual behaviors.

Data regarding seniors was also indicative of the need for increased interventions. The senior population is increasing in number in Taney County. Seniors issues in Taney County were identified as a priority issue because of the increasing number of seniors and the prevalence of conditions that could potentially increase morbidity and mortality among this population. While this is not one of the primary priorities of the Taney County Health Department, this priority will be addressed as resources and opportunities are made available.

Increasing awareness of healthy lifestyles to prevent debilitating chronic diseases, such as obesity and heart disease will continue. Collaboration between the Taney County Health Department and community partners has provided some initial success by illustrating the willingness among community members to participate in efforts addressing these problems. Examples of local collaborative efforts include:

- Tobacco use prevention efforts with Breathe Easy Taney County have brought together health care providers, elected officials, local public health, and other community organizations.
- School-based prevention programs to address tobacco use prevention among junior high school students.

- Partnerships with schools to provide nutritional education for students
- Presentation of community health assessment data to community leaders and elected officials to increase awareness and request input.
- Plans to reconvene community member focus groups to gather qualitative data regarding community health issues, barriers accessing programs, and other issues.

The health priorities identified through the community health assessment process have impacted many residents of Taney County. Many other health problems such as diabetes, heart disease, cancer, and stroke can be decreased in the county by addressing tobacco use and overweight/obesity problems. Child and Family Safety issues will focus not only on abuse and neglect, but will now include issues such as injury prevention.

The Taney County Health Department will continue to work with community partners to strengthen or implement needed local programs and ordinances. Additionally, the community health assessment process will continue as this updated information is provided to the community to increase awareness, encourage discussion and gather feedback.

Chronic Disease Risk Factors

Many of the numerous deaths due to cancer, heart disease, stroke and other chronic diseases that occur every year are the result of behaviors that negatively impact health. Healthy Lifestyle changes can help prevent many chronic diseases. Early detection and treatment are also important to help improve outcomes of these diseases. Table 5.8 provides information on the behavioral risk factors that were identified among Taney County residents in 2003. The 2007 survey was completed prior to this assessment, but the results for the county were not determined during the survey.

Taney County had a high percentage of respondents who reported having poor health, no health insurance, smokers, overweight and obese people. What is concerning, is the amount of women who reported not having a mammogram or breast exam within the last year.

Table 1

Behavioral Risk Factor Survey-Taney County, 2003				
	Percent			
	Taney County	Southwest Region	Missouri	United States
Health Status Reported Fair or Poor	19.0	18.8	16.9	14.8
No Health Insurance	21.0	17.4	12.3	14.5
Physical Inactivity	25.8	24.3	23.0	23.1
Current Smoker	34.4	26.7	26.5	22.0
Overweight (BMI >25-29.9)	41.8	35.6	35.3	35.0
Obese (BMI>30)	17.8	23.4	23.4	30.0
High Blood Pressure	20.1	27.9	28.5	24.8
High Cholesterol	30.5	37.2	37.3	33.1
Asthma	11.3	11.6	10.7	11.7
Diabetes	6.1	6.4	7.2	7.2
Never had a Mammogram	24.2	17.9	13.4	30.4
<i>No Mammogram or Breast Exam in Last Year</i>				
40-49 years old	68.1	52.3	49.4	--
50-64 years old	52.1	43.3	35.9	--
65 and older	52.6	51.3	47.4	--

Source: Missouri Department of Health and Senior Services (MO DHSS), BRFSS

Table 2

Health Indicators-Taney County, 2000-2006					
	Rate Per 100,000				
	Taney County	Stone County	Barry County	Lawrence County	Missouri
Cancer Mortality	203.0	176.9	204.2	199.1	201.0
Colon/rectum/anus cancer	16.2	14.3	21.9	18.2	19.8
Trachea/bronchus/lung cancer	67.9	58.6	67.7	66.3	62.8
Prostate cancer	9.2	8.2	10.7	9.8	9.1
Breast cancer	13.2	13.0	10.9	12.6	15.0
Diabetes	13.1	17.9	20.8	18.1	24.9
Alzheimer's disease	14.6	24.2	18.1	20.2	20.7
Heart disease	251.0	225.3	285.8	235.3	253.6
Cerebrovascular disease	47.6	43.7	69.2	82.9	56.8
Atherosclerosis	19.7	@@	@@	@@	4.4
Pneumonia and Influenza	29.6	13.8	25.2	33.2	23.7
Chronic Liver Disease and Cirrhosis	8.9	10.8	8.7	@@	7.2
Kidney Disease	17.7	10.8	16.6	19.0	16.9
Motor Vehicle Accidents	25.2	35.2	40.6	35.7	19.7
Suicide	13.6	10.5	13.8	13.4	12.6

Source: Missouri Department of Health and Senior Services (MO DHSS), Missouri Information for Community Assessment (MICA)

Health Priorities for Taney County, 2008

Tobacco Use

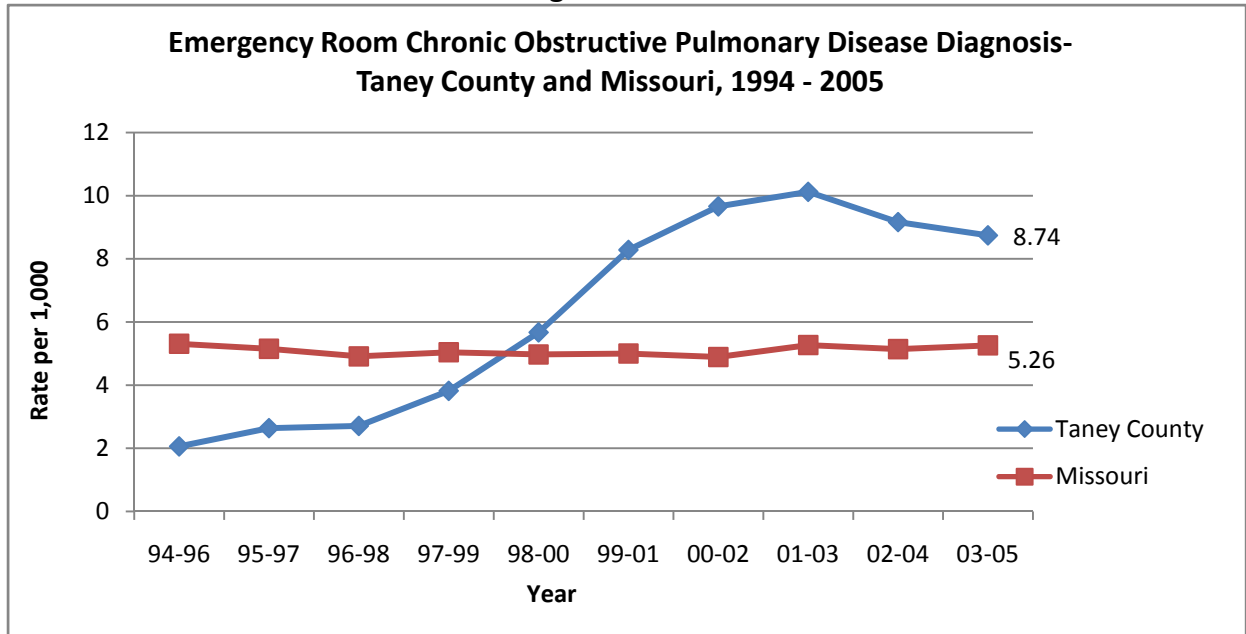
Tobacco use prevention was identified as a priority for Taney County based on several health indicators related to tobacco use. The Behavioral Risk Factor Surveillance Survey (BRFSS) from 2003 indicated that 34.4% of Taney County residents smoked tobacco. This rate was significantly higher than the Missouri rate of 26.5% and the national rate (22.0%). Data regarding new mothers who smoked tobacco was also higher than the state average with 25.4% of new mothers smoking tobacco in Taney County. Other indicators that were examined included Chronic Obstructive Pulmonary Disease, Heart Disease, Lung Cancer, and Atherosclerosis. Research from the National Institutes of Health and the Centers For Disease Control and Prevention indicate that these health consequences can be a result of smoking tobacco, as well as exposure to environmental tobacco smoke, such as that from cigarettes.

Table 3

Tobacco's Toll	Taney County	Missouri
Current smoking rate (2003)	34.40%	26.50%
New mother's who smoke (2006)	25.40%	18.40%
7th graders who smoke (2006)	25.80%	6.80%
11th graders who smoke (2006)	21.30%	27.80%
Senior citizen smokers >65 years of age (2006)	10.30%	9.20%

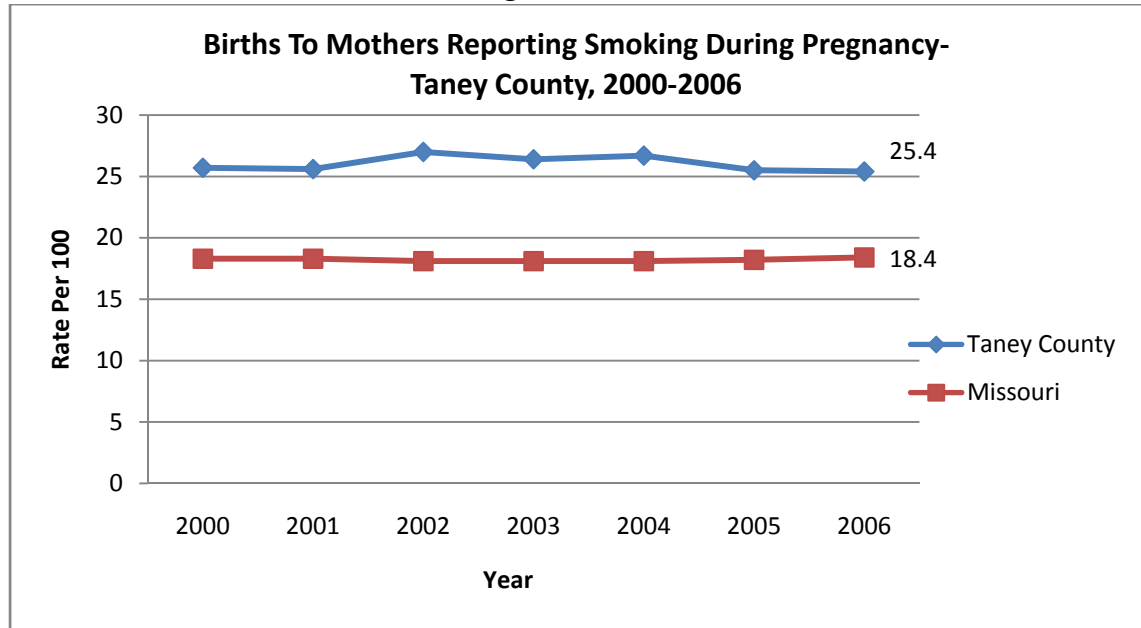
Source: MO DHSS, MICA

Figure 1



Source: MO DHSS, MICA

Figure 2



Source: MO DHSS, MICA

If Taney County is to maintain or lower rates of heart disease, cancer, stroke, atherosclerosis, and other chronic diseases related to tobacco use, it is important to initiate or broaden programs aimed at decreasing tobacco use among residents.

Obesity, Nutrition and Physical Activity

Obesity and Overweight prevention was also identified as a priority for Taney County based on several health indicators. The BRFSS report indicated that Taney County had a higher rate of overweight residents (41.8%) with a BMI of 25 to 29.9 as compared to the state rate of 35.3%. Additionally, the BRFSS indicated that a high percentage of residents were physically inactive as compared to the state rate. Maternal and child health data from several sources also indicated that new mothers and children were being reported as overweight and obese in the county more often. This data indicated a high percentage of new mothers were 20% or more overweight (36.9%) and approximately 24% of children receiving WIC services had a risk factor for being overweight (A5 or A6) according to MO DHSS data.

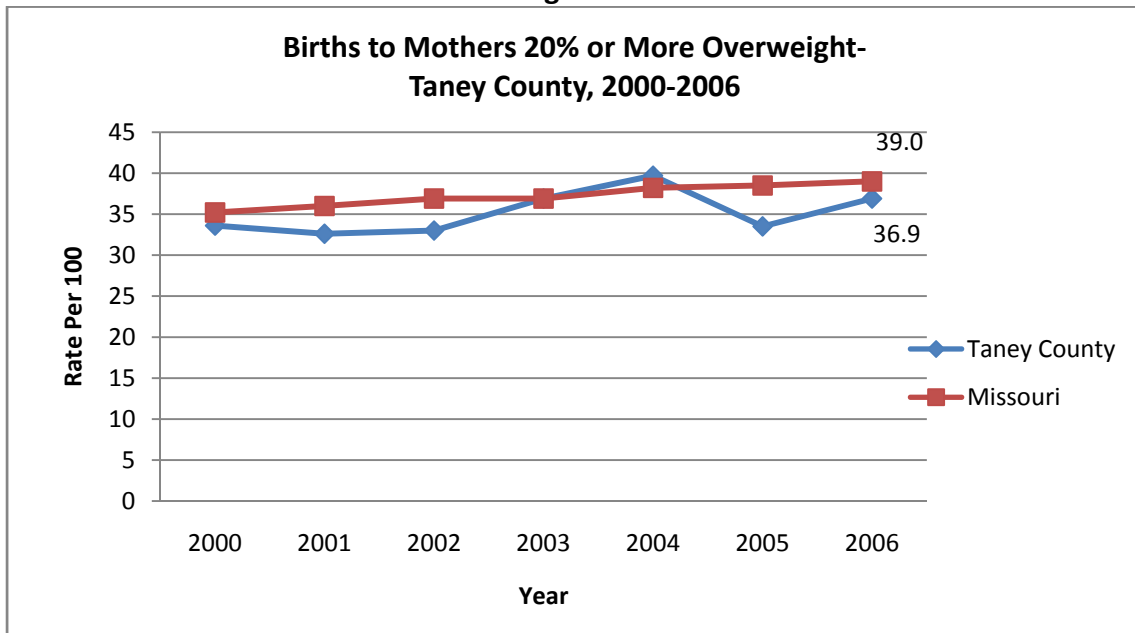
Data collected from two private and five public schools in Taney County indicated that 27% of students in the 4th to 10th grades had a BMI \geq 25. Data collected from 1,063 students indicated that of these students, 287 were identified as having a BMI \geq 25 (or 27%). BMI data was also collected at the Annual Kid's Care Event, sponsored by Skaggs Community Health Center. During the April, 2005 Kid's Care event, 219 children participated with 14 out of the 219 having a BMI \geq to 25 (6%).

Health indicators such as mortality rates for heart disease, atherosclerosis, high blood pressure, and diabetes were also considered. The rate of deaths due to atherosclerosis was significantly higher than the state rate while the other indicators were near the state rate or slightly lower. The number of diabetes related emergency room visits for had increased from 2000 to 2005 compared to previous years.

According to National statistics from the CDC:

- Overweight children are more likely to develop childhood diabetes, hypertension and lung problems.
- Overweight school age children are 50% more likely to become obese adults.
- Overweight adolescent are 70-80% more likely to become obese adults.
- Life expectancy for obese young adults is 5 to 20 years less than normal weight people.
- Obese adults have significantly higher rates of diabetes, heart disease, cancer, stroke, hypertension and arthritis.

Figure 3



Source: MO DHSS, MICA

Table 4

Indicator	Taney	SW Region	Missouri
Physical Inactivity (%)	25.8	24.3	23.0
Overweight (BMI 25-29.9)	41.8	35.6	35.3
Obese (BMI >29.9)	17.8	23.4	23.4

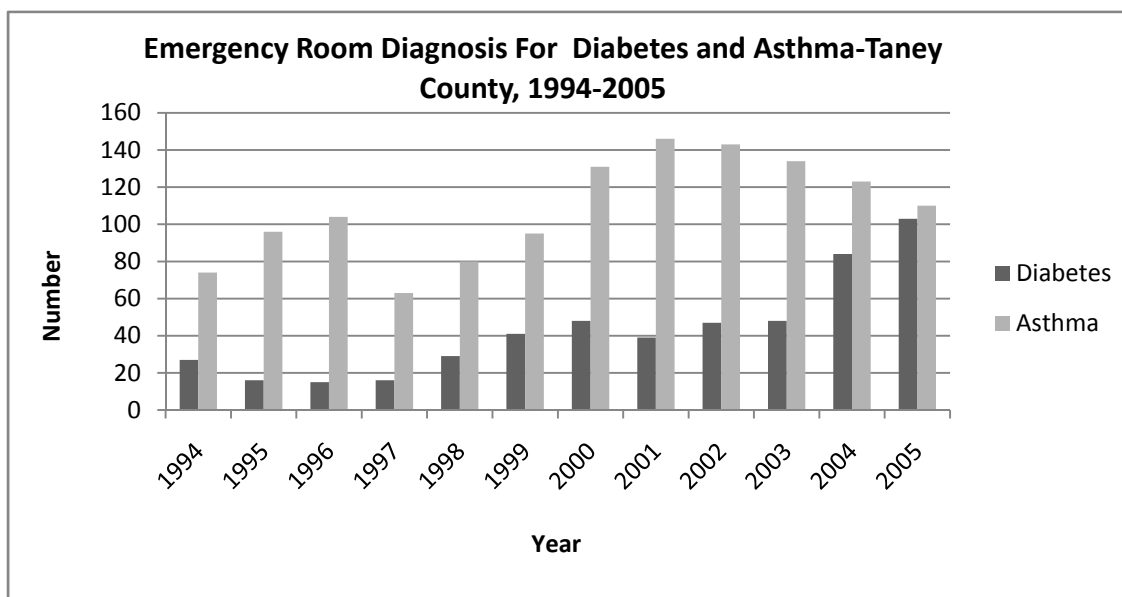
Source: Missouri 2003 Health and Preventative Practices Status Report.

Table 5

WIC Child Statistics for Taney County		Year: 2006	
Indicator	Taney	Missouri	
Birth weight - high (4000 grams or more)	8.5	8.0	
Weight for height - WIC - over (greater than or equal to 95th percentile)	16.3	17.2	
Weight for height - WIC - risk of overweight (85th to 95th percentile)	18.9	18.4	
Weight for height and gender (Body Mass Index) - risk of overweight (85th to 95th percentile)	19.1	18.0	
Birth Weight: High (greater than 4499 g)	0.6	1.1	
Weight for Height: Mother Overweight 20% or More	36.9	39.0	

Source: MO DHSS, MICA

Figure 4



Source: MO DHSS, MICA

If Taney County is to maintain or lower rates of heart disease, high blood pressure, stroke, atherosclerosis, diabetes, and other chronic diseases related to overweight and obesity issues, it is important for Taney County residents to improve nutritional choices, increase physical activity and increase awareness of the risks associated with unhealthy weight.

Child and Family Safety

The following tables and graphs highlight issues related to child and family safety. Alcohol and drug use related injuries, motor vehicle accident injuries and deaths, assault injuries, child abuse and neglect, self-inflicted injuries, and domestic violence were all considered while examining this issue. Taney County had high rates in several of these categories compared to Missouri including motor vehicle accident injuries and deaths, alcohol and drug related injuries especially among youth, self inflicted injuries and suicides among teens, fall injuries among seniors, and injuries overall. In fact Drug and Alcohol related injuries have been increasing overall since 1998 and have been higher than the state rate since that time as well. (Figure 5) During this same time period, motor vehicle injuries have remained higher than the state rate as well. (Figure 6)

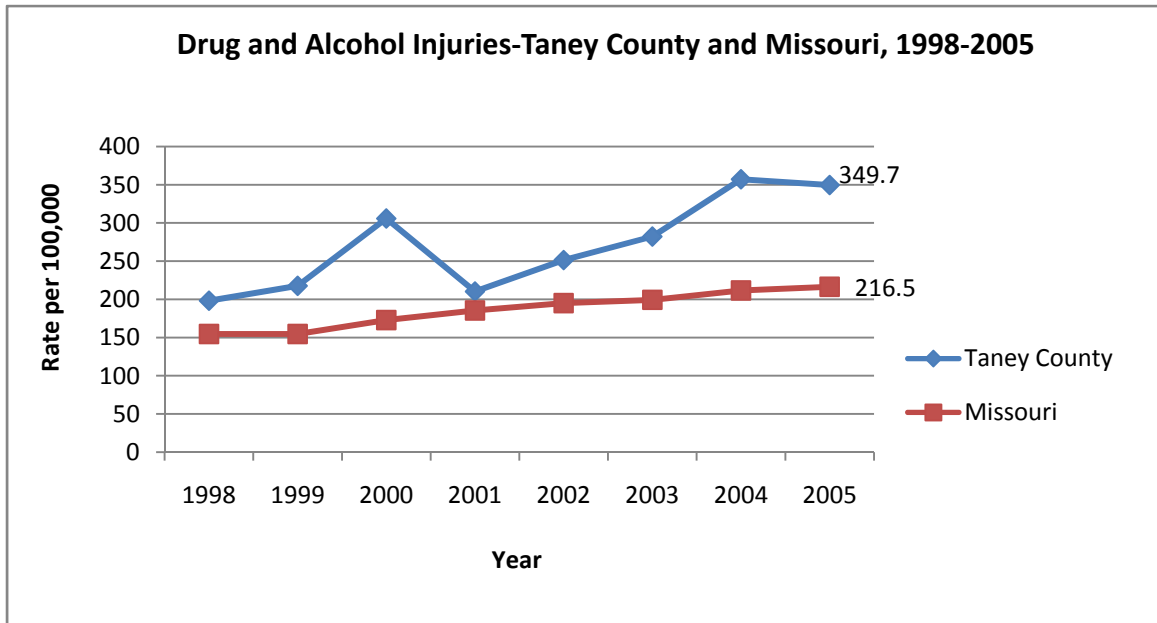
These indicators highlight the need for additional resources to be directed toward increasing awareness of these issues in the community.

Table 6

Type of Injuries By Age Group and Gender-Taney County, 2000-2006									
Type of Injury	Taney County								Missouri
	Age Groups					Total	Gender		Total
	Under 15	15 to 24	25 to 44	45 to 64	65 and Over		Male	Female	
Abuse/Neglect/Rape	44.5	@@	30.6	@@	@@	20.8	@@	30.7	42.7
Cut/Pierce	799.7	1,406.7	162.3	522.4	279.1	865.3	1,152.2	585.7	1,012.4
Fall/Jump	4,379.0	2,533.4	2,927.8	2,132.4	4,567.3	3,242.1	3,055.0	3,373.7	2,865.3
Fire/Burn	345.1	383.0	354.2	142.0	52.1	270.3	307.3	233.2	190.9
Firearm	@@	22.1	33.3	@@	@@	14.9	25.2	@@	30.4
Machinery	20.4	90.8	105.2	55.1	79.1	70.3	126.4	18.2	74.2
Motor Vehicle Traffic	731.1	3,670.1	2,208.8	1,109.6	626.9	1,657.1	1,603.3	1,708.6	1,226.3
Hot Weather	@@	34.4	33.3	16.5	16.7	21.6	30.4	@@	18.9
Dog Bites	324.7	88.4	98.5	78.6	37.5	134.3	150.0	117.8	111.9
Over-exertion	742.2	2,037.6	2,174.2	862.9	412.4	1,341.9	1,378.8	1,304.7	1,004.3
Poison/Overdose	272.8	491.0	476.6	270.2	120.8	345.4	302.7	385.2	245.0
Struck by/Against	2,959.6	3,166.8	1,959.8	798.1	501.9	1,910.2	2,396.7	1,428.0	1,744.2
All Injuries	13,842.2	17,277.5	14,512.4	7,408.9	7,828.8	12,392.4	13,350.4	11,395.3	10,738.1

Source: MO DHSS, MICA; @@-Indicates numbers too low for rate calculations.

Figure 5



Source: MO DHSS, MICA

Table 7

Drug and Alcohol Overdose/Poisoning - Injuries, By Age Group, Rate Per 100,000 - Taney County and Missouri, 2000-2005						
	10 - 14		15 - 17		18 - 19	
	Taney County	Missouri	Taney County	Missouri	Taney County	Missouri
Male	139.2	62.0	469.5	234.1	316.2	260.6
Female	140.0	167.0	859.5	497.1	342.6	369.6
All	139.6	113.3	654.5	362.1	330.0	313.8

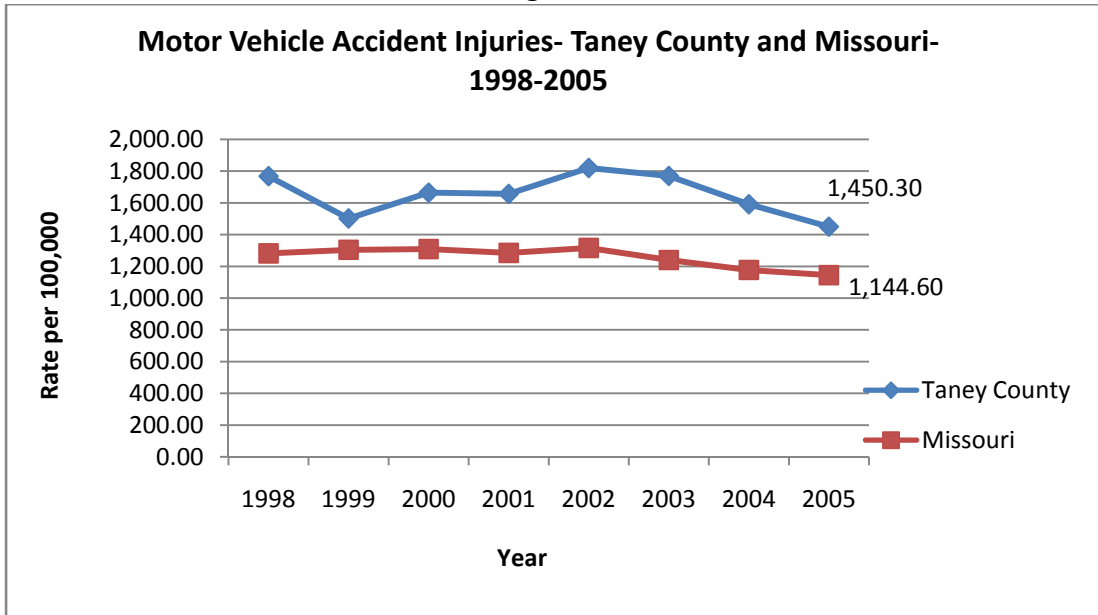
Source: MO DHSS, MICA

Table 8

Self Inflicted Injuries By Age Group, Rate Per 100,000 – Taney County and Missouri, 2000-2005,						
	10 - 14		15 - 17		18 - 19	
	Taney County	Missouri	Taney County	Missouri	Taney County	Missouri
Male	@. @	42.2	347.0	185.5	201.2	218.9
Female	98.0	134.8	701.2	411.7	263.6	308.5
All	59.8	87.4	515.0	295.6	233.7	262.6

Source: MO DHSS, MICA

Figure 6



Source: MO DHSS, MICA

Table 9

Motor Vehicle Occupant Injuries, By Age Group, Rate Per 100,000 – Taney County and Missouri, 2000-2005						
	10 -14		15 - 17		18 - 19	
	Taney County	Missouri	Taney County	Missouri	Taney County	Missouri
Male	809.8	504.6	3,102.70	2,186.60	3,736.70	2,791.00
Female	1,106.00	722.8	4,795.30	3,194.40	3,584.60	3,445.90
All	950.4	611.2	3,905.60	2,677.00	3,657.40	3,110.90

Source: MO DHSS, MICA

Table 10

Rate of Suicide Deaths Per 100,000 – Taney County and Missouri, 1995-2006		
	Taney	Missouri
Rate per 100,000	14.8	12.8
Number	74	8,664
Average Per Year	6.2	722.0

Source: MO DHSS, MICA

Table 11

Percent of Junior High Students Answering “Yes” to Survey Questions- Taney County, 2006-2007			
<i>Question</i>	In your lifetime	In the last year	In the last 30 days
Have you ever used alcohol other than for religious purposes?	30.7%	18.3%	6.3%
Have you ever used marijuana?	10.3%	7.1%	2.8%
Have you ever “sniffed” glue, gas, sprays or anything like that to get high?	9.3%	4.6%	1.6%
Have you ever smoked cigarettes?	18.7%	11.9%	4.8%
Have you ever used smokeless tobacco (chewing tobacco, snuff, etc)	6.3%	2.9%	0.9%
Have you ever used illegal drugs (crack, cocaine, meth, etc) or prescription drugs illegally?	4%	2.2%	0.9%

Source: Taney County Health Department

A local behavioral survey among junior high students during the 2006-2007 school year observed that 30.7% of students reported that they had used alcohol and 18.7% reported that they had smoked cigarettes. Of those that had used alcohol and cigarettes, 18.3% had used alcohol and 11.9% had smoked cigarettes within the past year. (Table 11)

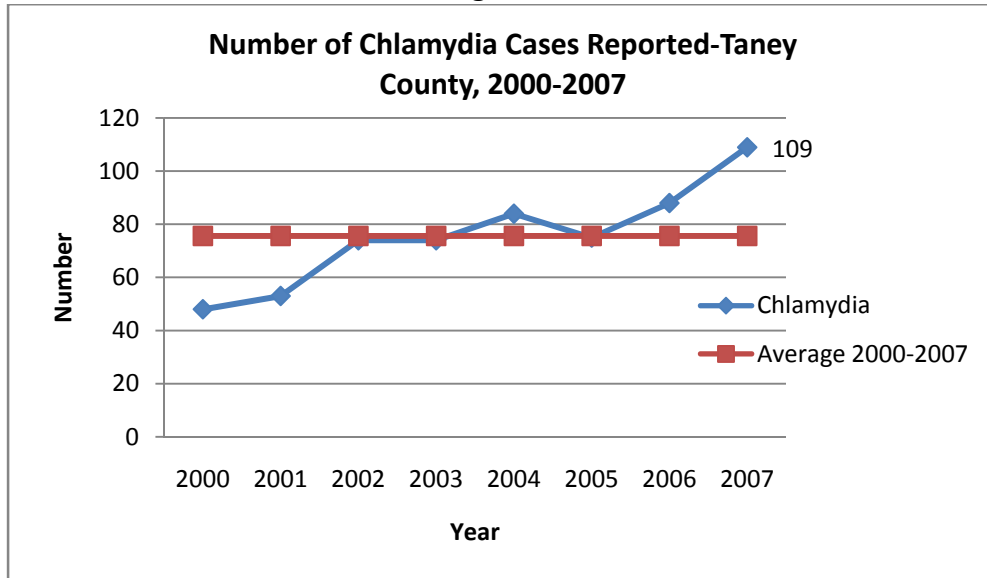
These health indicators reveal that children and families in Taney County face several threats that could lead to increased morbidity and mortality. By addressing some of these issues through public health education and awareness efforts, the incidence of these problems can be lowered in Taney County.

Other Areas of Concern

Communicable Disease Prevention

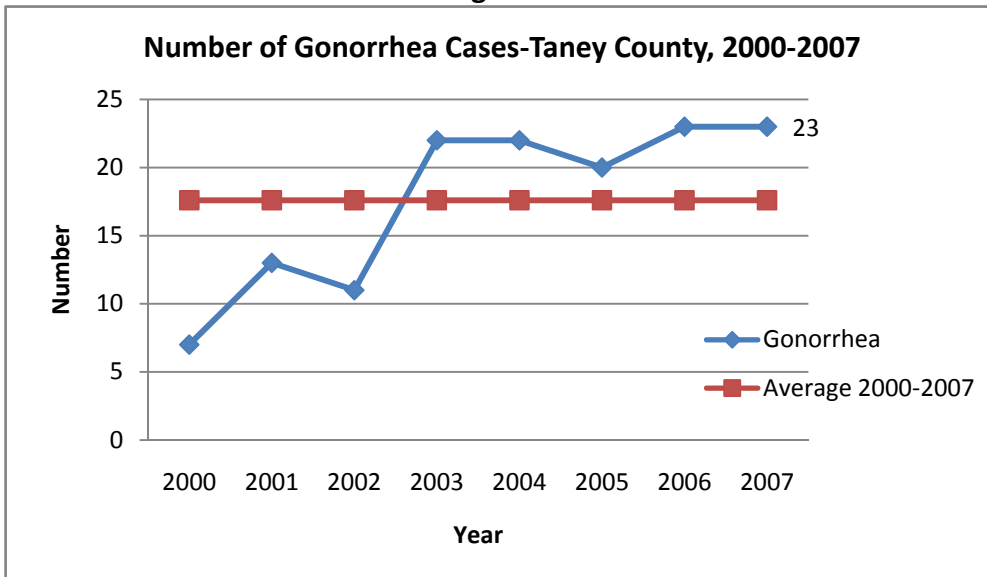
Communicable diseases will continuously threaten residents of Taney County. Ongoing efforts by local health department staff and healthcare providers strive to identify, prevent further spread, and treat those who are ill with communicable diseases. An analysis of communicable disease data has indicated that the numbers of sexually transmitted diseases have increased over the past years with a dramatic increase in the number of Chlamydia cases in 2007 with an overall increasing trend since the year 2000. (Figure 7) Other increases have been observed with Hepatitis C and tick-borne diseases.

Figure 7



Source: Taney County Health Department

Figure 8

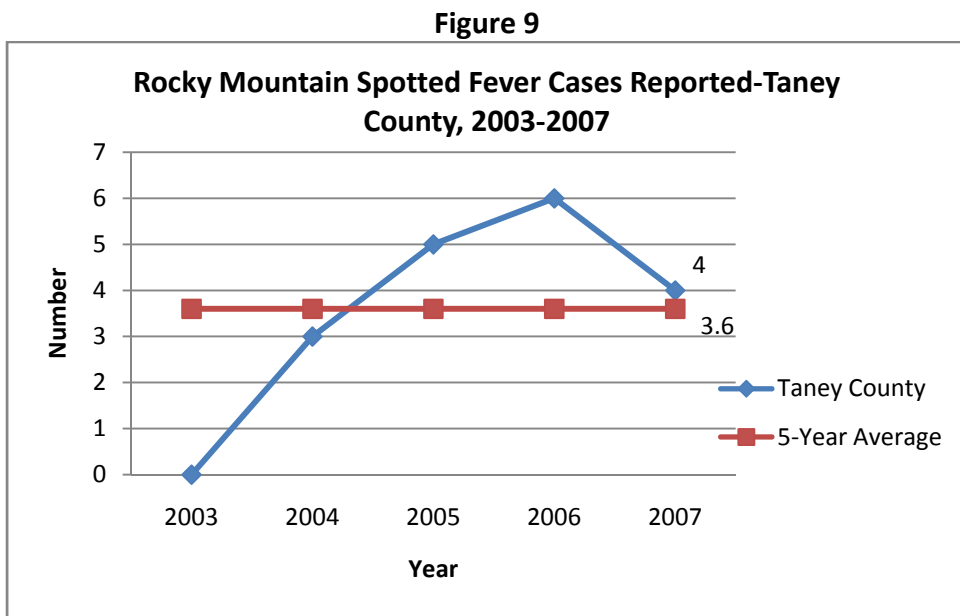


Source: Taney County Health Department

Other communicable disease threats to Taney County include noroviruses. Noroviruses cause a sudden onset of vomiting and/or diarrhea with a combination of other symptoms. These viruses are very contagious and spread easily from person-to-person. These viruses are a particular threat to schools, long-term care facilities and local businesses that rely on tourism.

Tick-borne diseases such as Tularemia, Lyme disease, Ehrlichiosis, Rocky Mountain Spotted Fever continue to pose a threat to residents of Taney County. Over the past few years these illnesses have steadily increased. Many reasons may account for this increase including better laboratory tests, increased physician awareness, and an increase in the number of people exposed to tick bites as they engage in outdoor activities.

Figure 9 provides the number of confirmed and probable cases of Rocky Mountain Spotted Fever Cases Identified in Taney County from 2003 to 2007. During this time the numbers of cases reported increased. The average number of cases during this time was 3.6.



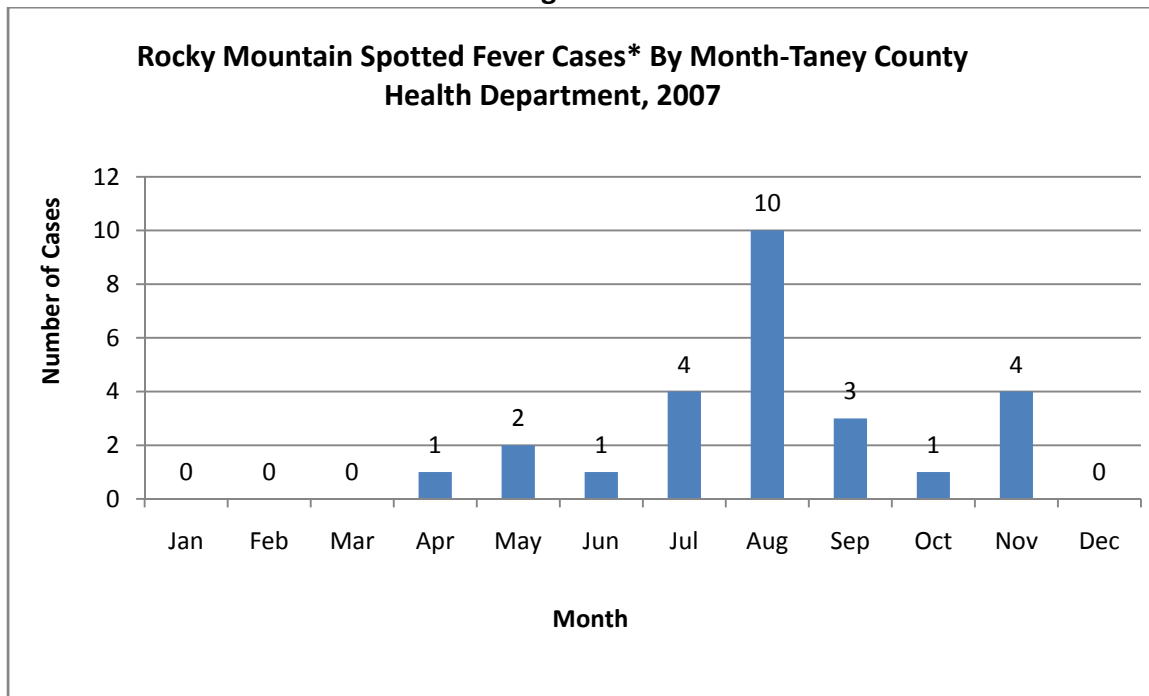
Source: Missouri Department of Health and Senior Services

Table 12

Suspect, Probable and Confirmed Tick Borne Diseases-Taney County, 2007	
Ehrlichiosis	6
Lyme Disease	12
Rocky Mountain Spotted Fever	26
Tularemia	1

Source: Taney County Health Department

Figure 10



Source: Taney County Health Department; *Includes Suspect, Probable and Confirmed Cases.

Figure 10 provides an excellent example of the incidence of tick borne diseases by month of diagnosis. Diseases caused by tick bites occur mainly during the summer months in Taney County. However, these illnesses have been diagnosed during winter months and very early spring as well. Regardless of the time of year, it is best to take precautions to avoid tick bites whenever going outdoors where ticks may be.

The prevention of communicable diseases was determined to be an area of concern because of the increase in the number of these conditions and the threat that they pose for further morbidity and mortality in the population. Existing programs in the Taney County Health Department will be utilized to offer educational opportunities for community members to increase awareness and strengthen prevention efforts.

Senior Issues

The need for increased senior related programs and efforts was recognized in part because of the increasing numbers of seniors in Taney County and the United States. Additional areas of concern were identified as health indicators were examined for the senior population. This analysis revealed that this population had increased mortality rates compared to the Missouri rate for seniors including atherosclerosis, Liver disease, pneumonia and influenza, and suicide. Seniors also had increased rates for injuries

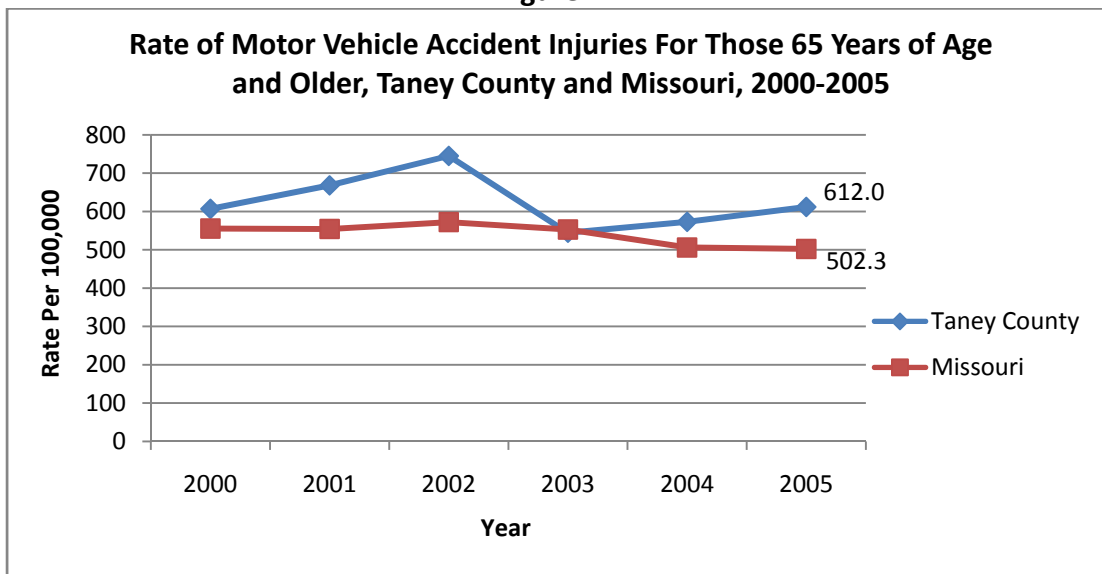
related to motor vehicle accidents, poisonings/overdoses, machinery, hot weather, and overexertion.

Table 13
**Mortality Rates Per 100,000 For Those Over 65 Years of Age-
Taney County, 2000-2006**

Cause of Death	Taney County		Missouri
	Number	Rate	Rate
Cancer	491	1,022.60	1,130.00
Diabetes	35	72.9	150.0
Alzheimer's Disease	50	104.1	173.5
Heart Disease	708	1,474.50	1,723.30
Cerebrovascular disease (Stroke)	149	310.3	416.5
Atherosclerosis#	68	141.6	35.2
Pneumonia & influenza#	103	214.5	178.5
Liver Disease. Cirrhosis	15	31.2	22.5
Kidney Disease	52	108.3	118.8
Motor Vehicle Accident	12	25.0	24.1
All other Accidents	38	79.1	87.5
Suicide	12	25.0	16.0
Total all causes	322	4,490.90	5,354.20

Source: Missouri Department of Health and Senior Services, MICA
@. @ indicates numbers were too low for rate calculation

Figure 11



Source: Missouri Department of Health and Senior Services, MICA

Table 14

Injuries By Type For Those 65 Years of Age and Older, Rate Per 100,000 - Taney County and Missouri, 2000-2005			
	Taney County		Missouri
	Number	Rate	Rate
Total Injuries	3,211	7,892.9	8,514.2
Fall/Jump	1,851	4,549.90	5,284.40
Machinery	38	93.4	57.2
Motor Vehicle	254	624.4	540.4
Hot Weather	8	19.7	14.9
Over-exertion	172	422.8	368.0
Drugs/Alcohol	48	118.0	85.7

Source: Missouri Department of Health and Senior Services, MICA

These senior issues were determined to be areas of concern and will become areas of focus as programs are developed to address the main priority issues.

Environmental Health Issues

Environmental health concerns for Taney County include water quality issues, sewage, and food safety. Many of the issues with water quality and sewage are the result of increased development in the county. As more development occurs increased demands will be placed on existing infrastructure and water resources. Onsite wastewater treatment facilities continue to be a concern. Improper operation and maintenance of these facilities could potentially threaten local water resources.

Table 15

Onsite Wastewater Treatment Systems- Taney County, 2007	
	Number
Total Onsite Wasterwater Treatment Systems	6200
Malfunctioning OWTS Complaints	58
OWTS Violations	10
Systems Under Violation Notice Brought Into Compliance Without Prosecution	10
Systems Under Violation Notice Brought Into Compliance Through Prosecution	0

Source: Taney County Regional Sewer District

Food borne illnesses are a high concern for Taney County. The many restaurants that depend on the local tourism industry are required to have managers on duty who have

attended food safety classes. Additionally, local businesses are provided the opportunity to attend training focused on the prevention of the spread of noroviruses. Noroviruses are very contagious and cause a sudden onset of vomiting and diarrhea. Oftentimes ill visitors to the area may expose others to the illness as they visit attractions, restaurants, theaters, and hotels. Because of this, the Taney County Health Department directs substantial resources to the identification of these types of illnesses and to the prevention of the spread of illnesses once identified

Table 16

Food Illness Complaints- 2002-2006							
	2002	2003	2004	2005	2006	Percent Change 2005-2006	5-Year Average
Food illness complaints	79	107	131	84	108	28.6%	101.8
Food illness investigations	11	9	12	24	10	-58.3%	13.2
Norovirus Outbreaks (Laboratory Confirmed)	1	0	0	0	1	--	--

Source: Taney County Health Department